

Musical notation for the first system, measures 1-2. The treble clef staff contains a melodic line starting with a whole note G4, followed by a quarter rest, then eighth notes A4 and B4, a quarter note C5, and a triplet of D5, E5, F5. The bass clef staff contains chords: D/C, D/Bb, and Abma7(#11).

Musical notation for the second system, measures 3-4. The treble clef staff contains a melodic line starting with a whole note G4, followed by a quarter rest, then eighth notes A4 and B4, a quarter note C5, and a triplet of D5, E5, F5. The bass clef staff contains chords: G7(b13)(#9) and Cm7(11).

Musical notation for the third system, measures 5-6. The treble clef staff contains a melodic line starting with a whole note G4, followed by a quarter rest, then eighth notes A4 and B4, a quarter note C5, and a triplet of D5, E5, F5. The bass clef staff contains chords: Bm7(11) and Am7/B.

Musical notation for the fourth system, measures 7-8. The treble clef staff contains a melodic line starting with a whole note G4, followed by a quarter rest, then eighth notes A4 and B4, a quarter note C5, and a triplet of D5, E5, F5. The bass clef staff contains chords: Bm7(11)/E and Am7/E. The system ends with a double bar line and repeat dots.

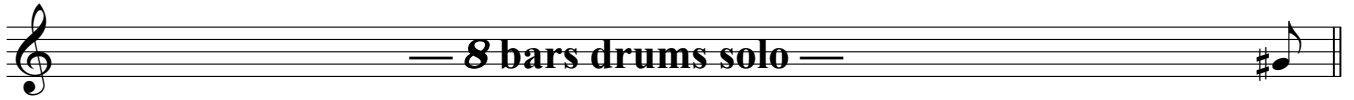
D.S. Then open solo on **B**

On Cue

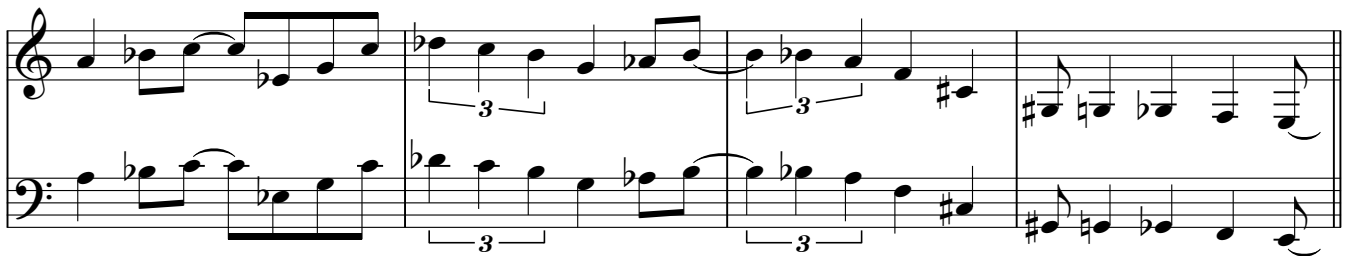
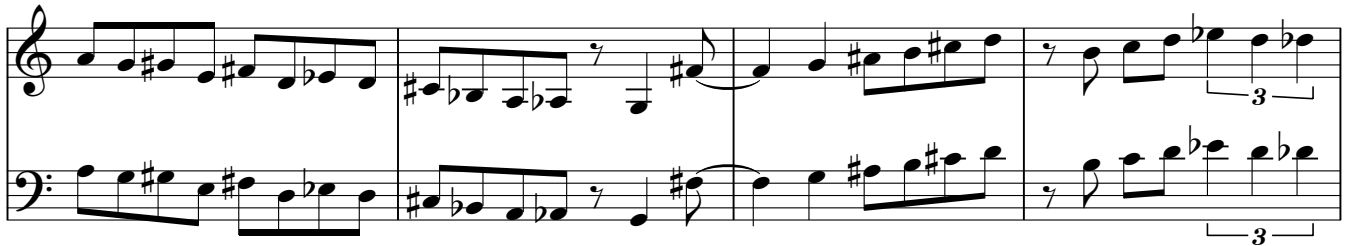
C1

Musical notation for the fifth system, measures 9-12. The treble clef staff contains a melodic line starting with a quarter note G4, followed by eighth notes A4, B4, C5, D5, E5, F5, G5, and a quarter note G4. The bass clef staff contains a bass line starting with a quarter note G2, followed by eighth notes A2, B2, C3, D3, E3, F3, G3, and a quarter note G2.

Musical notation for the sixth system, measures 13-16. The treble clef staff contains a melodic line starting with a quarter note G4, followed by eighth notes A4, B4, C5, D5, E5, F5, G5, and a quarter note G4. The bass clef staff contains a bass line starting with a quarter note G2, followed by eighth notes A2, B2, C3, D3, E3, F3, G3, and a quarter note G2.



C2



After drums solo Play B Rubato
D.C. Vamp on Intro, play A

